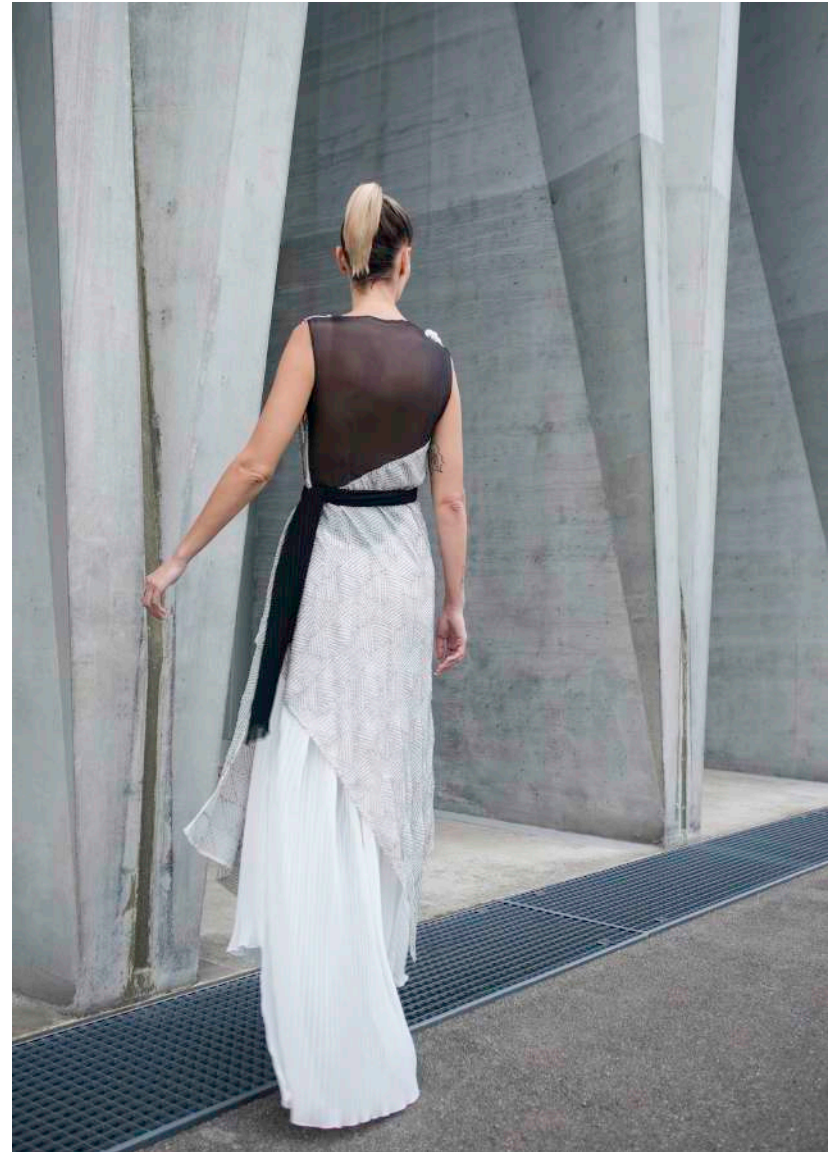


ALINE OCHOA

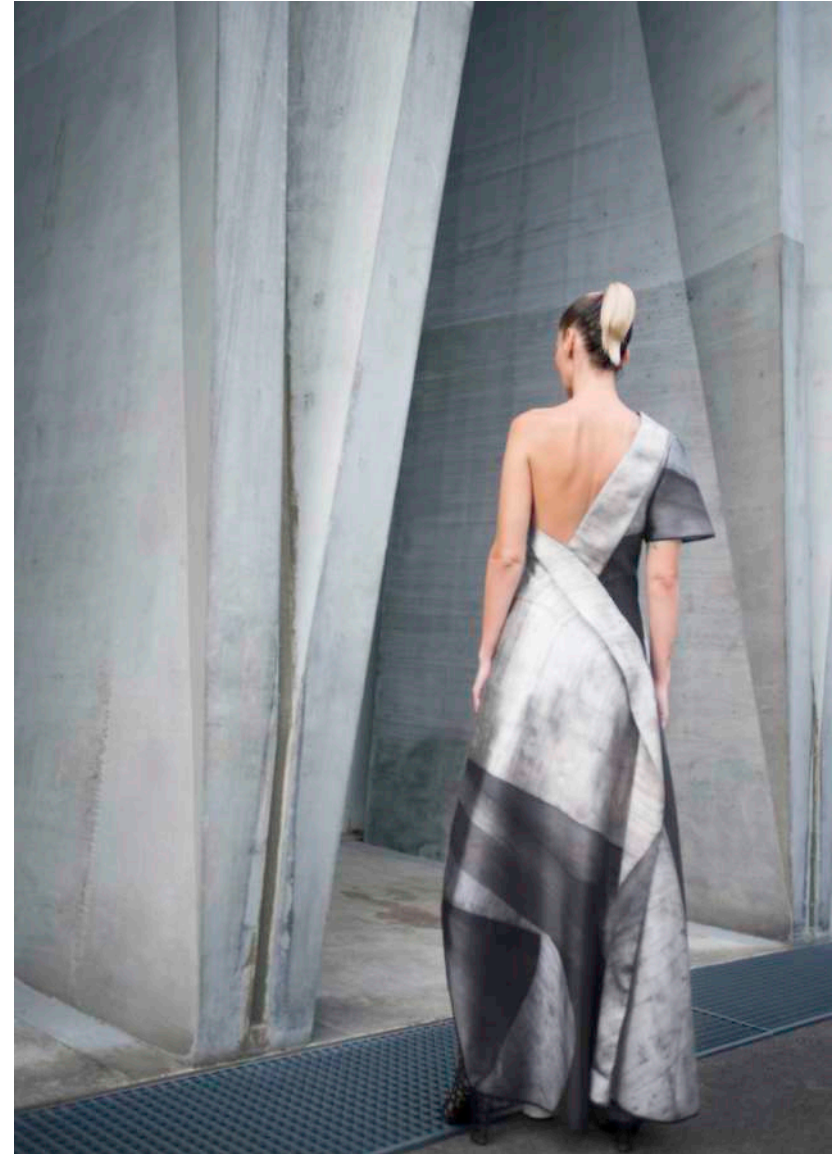
PORTFOLIO PERSONAL WORKS

Algae sequins
dress :
Technique:
biomaterial
sequins made
of Algae hand
stitched on silk





Mikado silk
asymmetric dress
and digital print





ALINE OCHOA

PARIS

AUTOMNE HIVER 2014/15 COLLECTION FEMME
"Requiem d'un bal d'automne"

Cette collection s'inspire de la forêt au moment de son apoptose saisonnière. Gorgée de tonalités, elle nous rappelle toute l'énergie de la vie ; rouge, couleur du sang, jaune couleur du soleil. Et comme à chaque automne, il est difficile de s'imaginer que toutes ces nuances s'éteindront le temps d'une saison. Nous avons commencé par photographier les feuilles, ces explosions de couleurs qui nous enchantent. Un typhon de coloris à l'image d'une saison qui nous offre son tout dernier spectacle, son dernier souffle. Une exhibition qui laisse place à un espace paisible, de charnelles clairessemées, attendant le printemps. Cette collection est le souvenir de cette expérience, cette rafale automnale qui vêtira la femme de demain. Il s'agit du repos de la couleur ; la photographie d'une mémoire passée ou à venir. C'est l'intense réminiscence d'un bal révolu, de l'éblouissance d'un automne chamarré, nous laissant patienter le temps d'une année.

AUTOMNE WINTER 2014/15 WOMEN'S COLLECTION
"Requiem of an Autumn Dance"

This collection is about the woods that are on the brink of their seasonal decline. Full of colours that symbolize the energy of life, like red as the colour of blood, yellow as the colour of the sun. Although we know it is hard to imagine when you are in a wood so coloured that in a short time everything will have gone to sleep. We started by doing pictures of leaves in this blast of colours that was surrounding us. It is a blurred crazy dance of embracing and repelling of all this colours; it feels like the woods have one last blast before letting it all go. Left is only a peaceful space of naked trees that are sleeping, waiting and gathering energy for rejuvenation. On the dresses as we see them now the colours are a memory of this experience, a constructed memory that holds the body of our women. It is a colour requiem that holds this memory like a photograph of our past. It's memory of a bygone dance of colourful bliss that lasts just till the next one takes our fancy.

AUTOMNE HIVERS 2014-15



Autumn flora: Prints
on textile
Technique:
Photography &
Watercolors



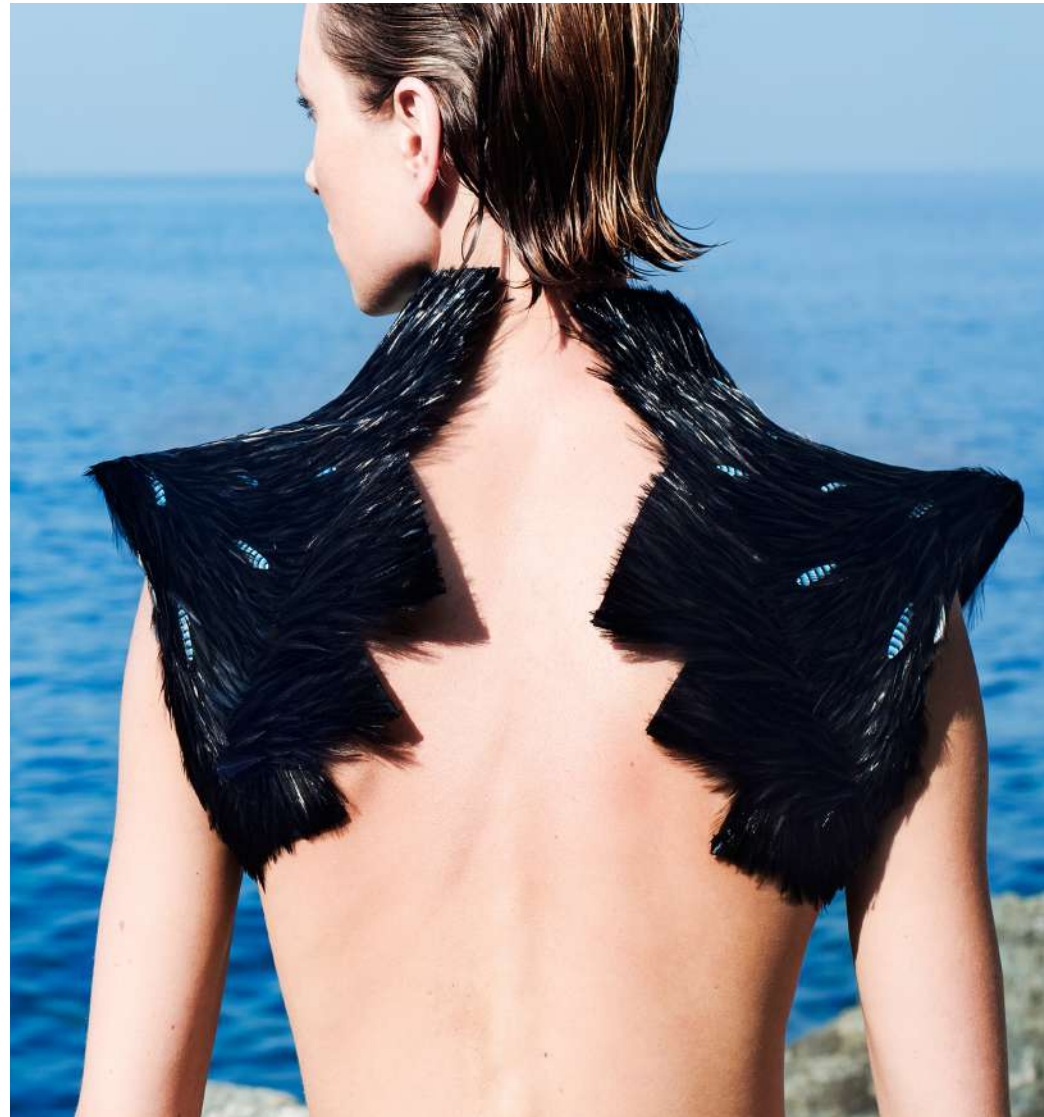
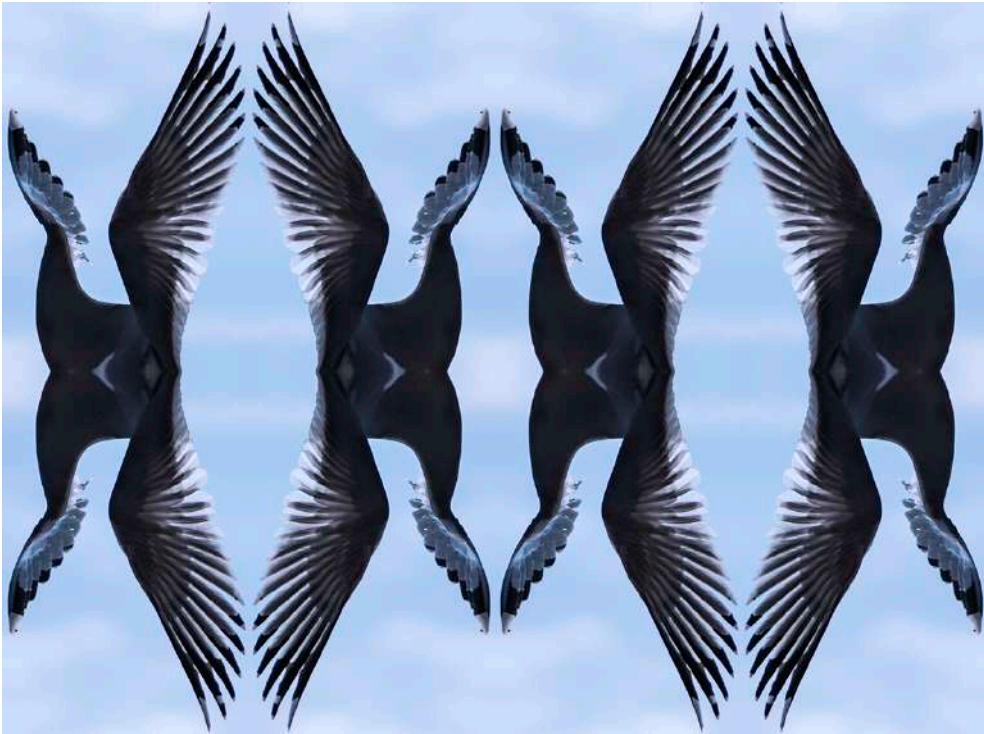




"FROM THE SHORE"
Spring Summer 2014 collection

Born on the shores of Italy, this collection is reminiscent of a place on the rocks, above the sea and close to Portofino. In this place one cannot ignore the vast sea, the enormous sky stretching to the horizon and its feathered inhabitants gliding between the seams.

Always inspired by nature's esthetics and textured surfaces, this season, our main design influence is the bird. Inspired by the transgression of their motions in flight, the lines and cuts explore the natural forms found in feathers and aerial movement. Supporting these design elements, are blurred photographs in shades of blue, grey and green from the horizons colours, all complimenting parts of the fabric and the background of printed wings.



ALINE OCHOA



PRINTIEMPS / ÉTÉ 2014
— A2 —

HAND MADE FETHER SHOULDER PIECE & « PLASTRON »



Prints on silk organza
Technique: Digital Photography



AOSS2014_01

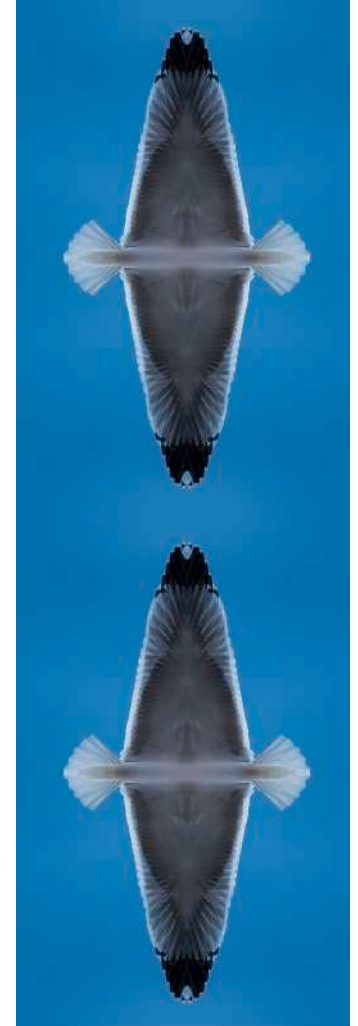
Long evening dress in silk with full gradient print in cream and light blue and pleat detail on the back, draped cowl front neck and draped front waist and back, size zip.





AOSS2014_16

Full length silk dress in gradient shades of violet purple, sky blue and teal, sleeveless, violet and navy front bodice with v-seam detail, square front neckline and low v-back, double layer cape back featuring bird print and pleat detail along the shoulders, side zip.



DIAVOLEZZA

Press Release ALINE OCHOA, Autumn/Winter 2013/14

The inspiration for this collection comes from the Swiss mountains region of Engadina. It started with a research trip to this region, where Aline's husband and partner Tom took pictures of the mountains and nature that was covered in deep snow.

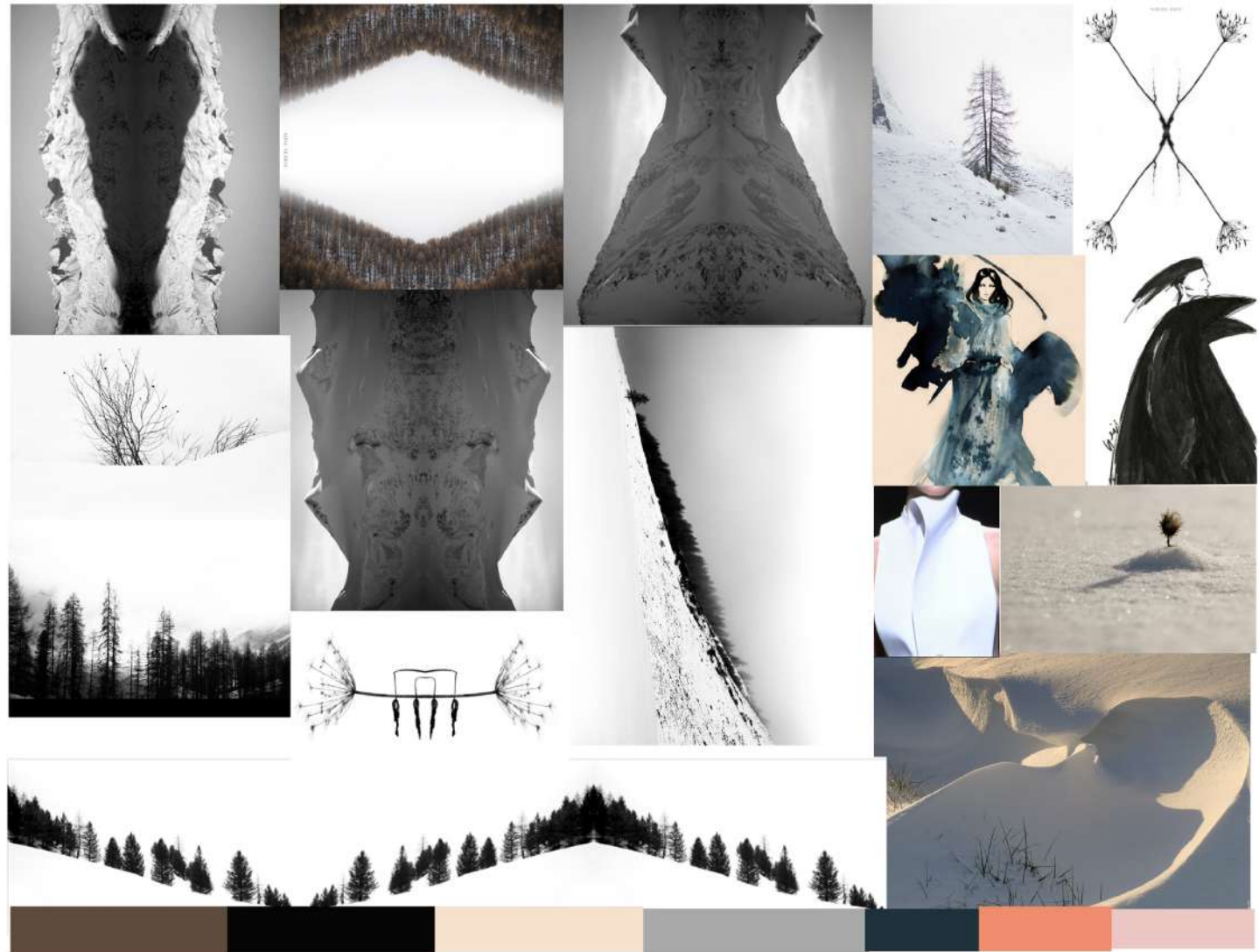
Inspired by this trip and Tom's pictures, Aline started to sketch ideas that came from shapes of the mountains, rocks and ice formations of the glaciers. Also the snow covered trees, branches and grass leaves inspired her sketching. It was intended that some elements from Tom's pictures would be used as prints for the fabrics of the garments.

Aline with her architectural approach for designing cloths, wanted to use the prints as a support for her designs. For her it always starts on the shapes and cuts that reflect the inspiration, the prints strengthen the designs of the dresses.

Tom while working with the pictures of the mountains discovered through mirroring parts of the images amazing shapes that had a life on it's own with grimacing faces, dark clowns, and diabolic shapes. These interpretations perfectly reflected the place where the pictures were taken as it is called Diavolezza, which means she-devil.

With these prints Aline and Tom decided to do printed silk foulards that could be either used as prints in a frame on a wall or with it's original intention as a wearing item. The foulards are a limited edition of 13 each.

For Aline and Tom the Diavolezza is not representing something evil, it represents the majestic beauty and strength of these mountains that can be dangerous if not respected properly. The woman of ALINE OCHOA is also strong, beautiful and should be respected, in some way like the mountains of Diavolezza.





AOAH/2013-14/14 ALINE OCHOA WWW.ALINEOCHOA.COM



AOAW2013/14_14
Double face woolen
crepe corseted frock in
black & brown/ Printed
dress bare back.



AOAH/2013-14/17

ALINE OCHOA

WWW.ALINEOCHOA.COM



AOAW2013/14_17
Tailored cashmere
jacket with printed
sides/ Printed skirt
with embroider mesh
stripes on sides.



AOAH/2013-14/19

ALINE OCHOA

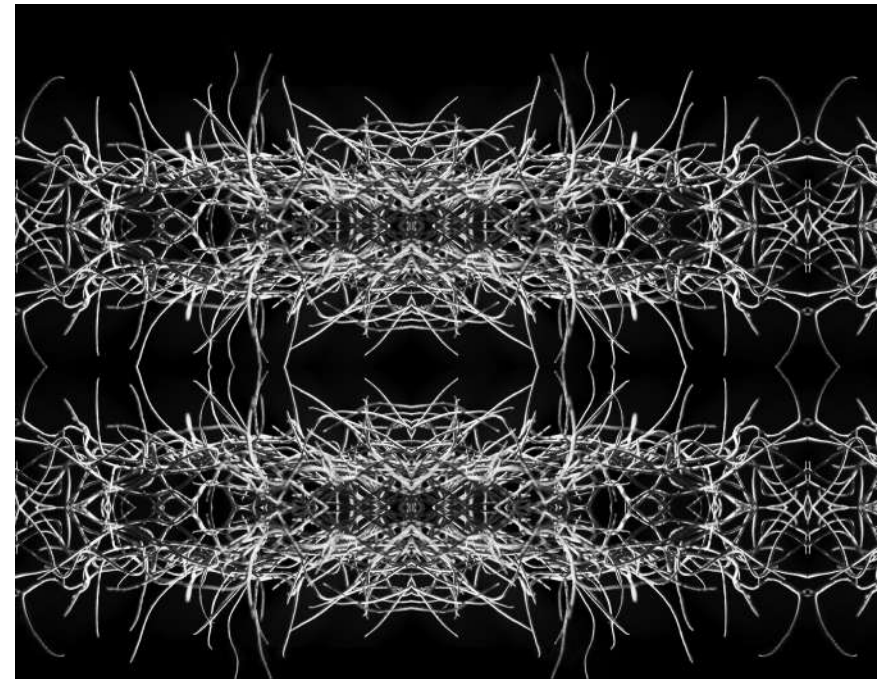
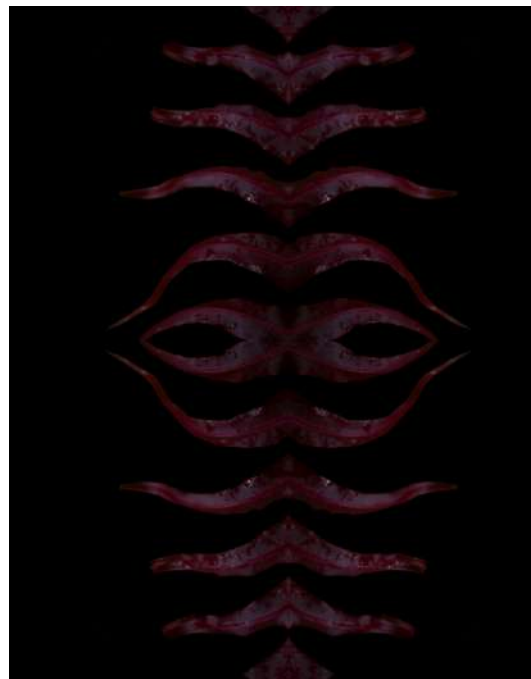
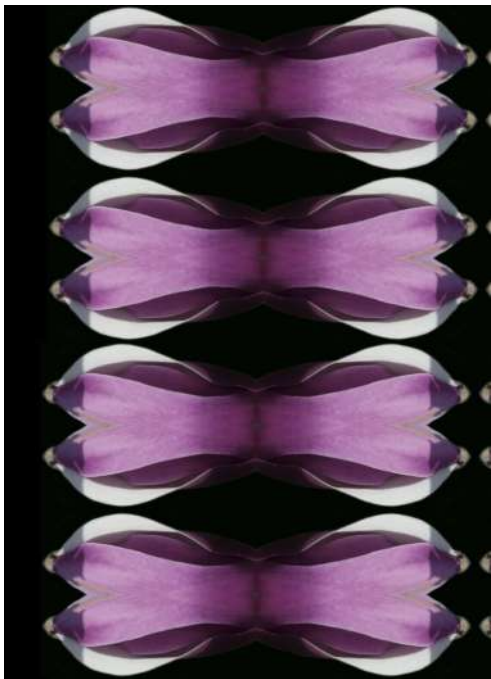
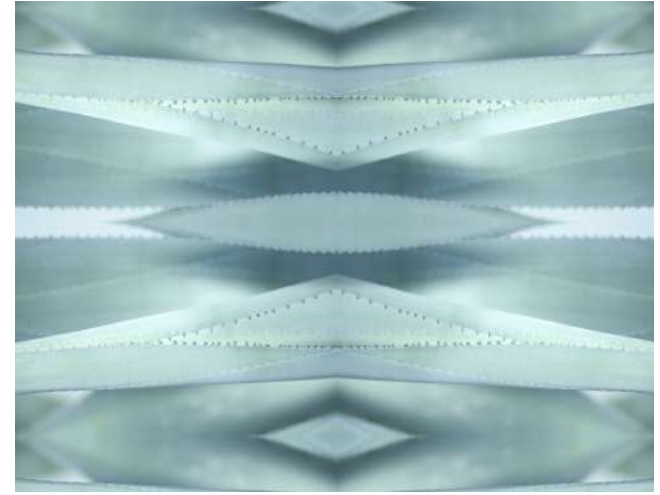
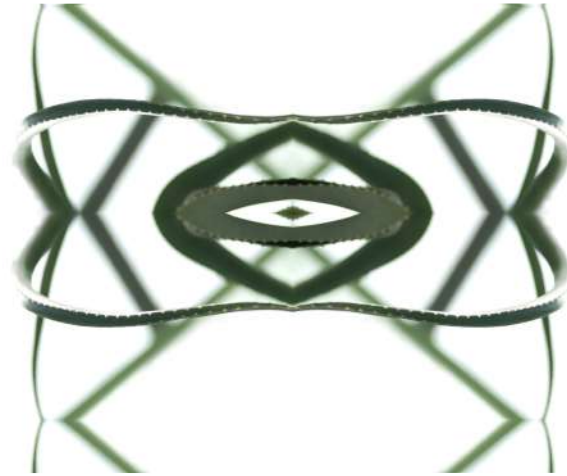
WWW.ALINEOCHOA.COM



AOAW2013/14_19

Black gown dress in
wool jacquard
texturized motif with
bare back and
embroider mesh
stripes

Prints on silk
Technique: Photograph close ups
Digital print





ALINE OCHOA*

PE-13/10

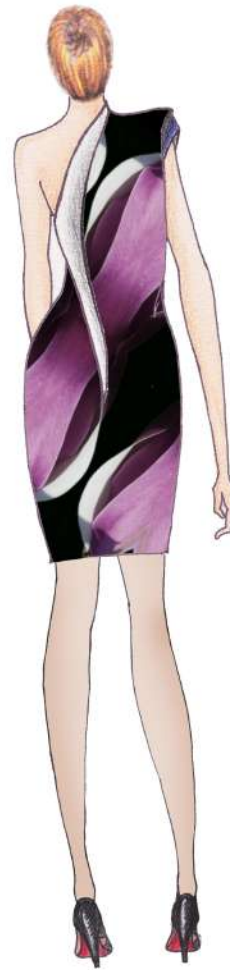
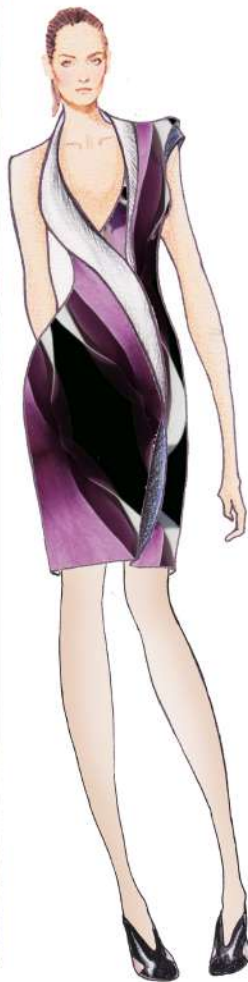


robe imprimée fougère rouge et noire avec profonde décolletée au dos et veste zippée dans le bas, à la robe au tour de la taille en le pliant vers l'intérieur, en tissu double face noire et rouge.



ALINE OCHOA*

PE-13/11



Robe imprimé fleur noire et rose asymétrique sans une épaule avec application à façon feuil tout au long de la robe dans le centre devant et derrière



ALINE OCHOA*

PE-13/09



© TOM MAIER PHOTOGRAPHY - WWW.TOMMAIERPHOTOGRAPHY.COM

ALINE OCHOA, BO CREATIVE ATELIER 549L PARIS, FRANCE, +33(0)1 71 70 59 41, INFO@ALINEOCHOA.COM, WWW.ALINEOCHOA.COM

Robe soirée avec long décolleté devant et dos en tulle entièrement brodé en fils d'argent lamé, croise devant et dos avec petit revers de haut en bas tout au long de la robe à façon foulée, dans milieu devant et milieu dos, grande ceinture en maille argent qui passe au-dessus des revers.



A/H 13-18



SILK PLEATS AND HAND PRINT



A/H 13-18

SILK PLEATED DRESS



A/H 13-19



A/H 13-19



A/H 13-19

SILK PLEATED DRESS



AO-SS12-21

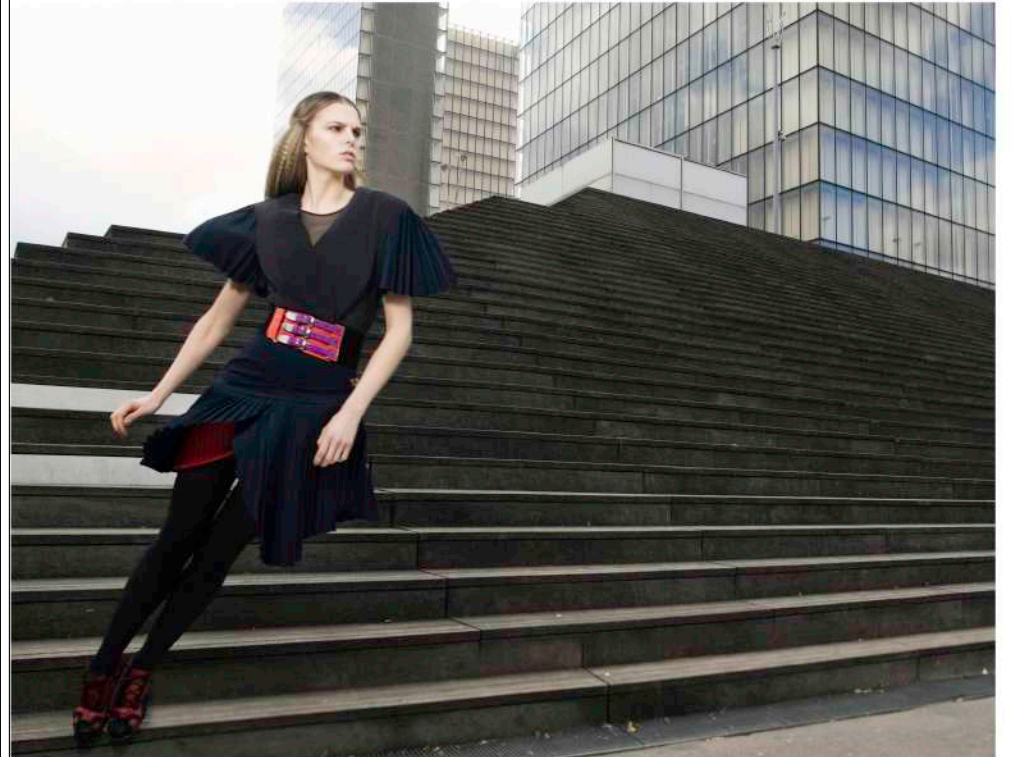
SILK & LEATHER PLEATED DRESS





ALINE OCHOA

PLEATED WOOL & CASHMERE

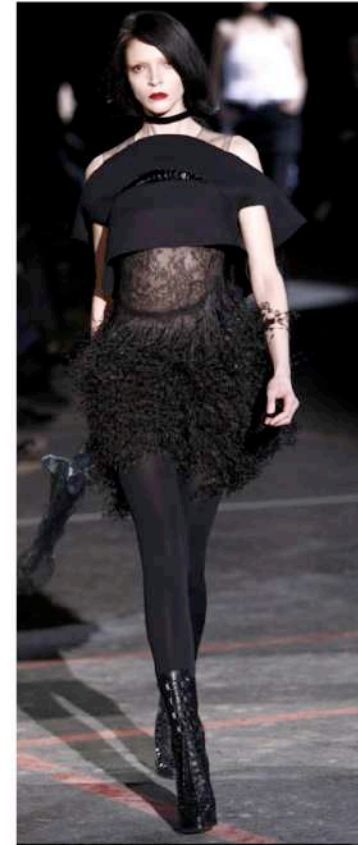


ALINE OCHOA

Collaborations



GIVENCHY
Haute couture Spring 2010

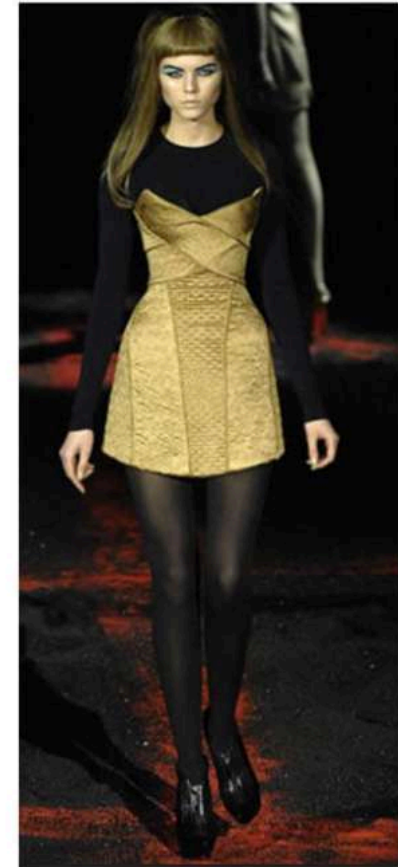


GIVENCHY
Fall 2010

Collaborations



ALEXANDER Mc QUEEN
FALL2007



ALEXANDER Mc QUEEN
FALL2007

WORK COSTUMES



Peau d'âne : Palais Chaillot Paris

Peau d'âne : Palais Chaillot Paris



Gourmandises : Maison Jean Jacques Rousseau



TOKYO WORKS
2003



Leather corsage , Hand embroidered Tulle and Silk



Mycelium Leathers



Diverse Mycelium leather techniques



Galuchet imitation
Technique : Mycelium
leather Sodium Chrystals &
Algae



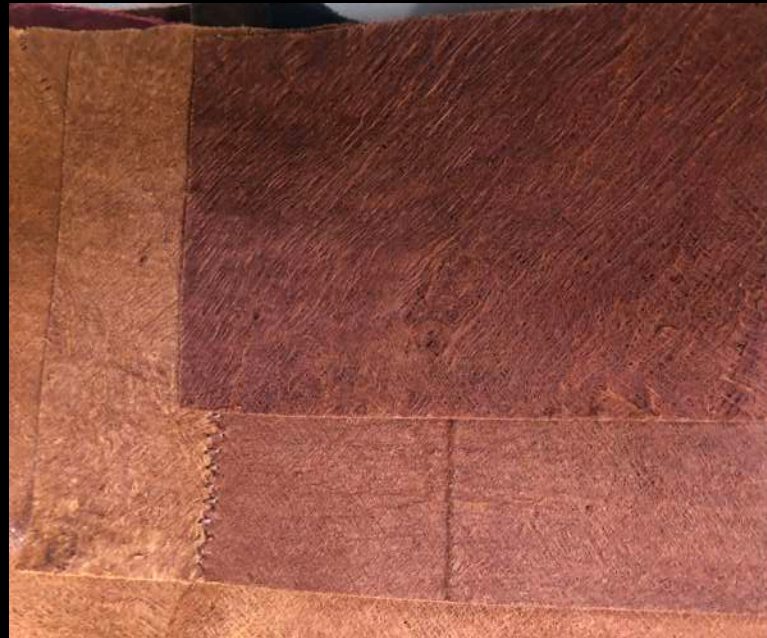
MYCELIUM OBJECTS



MYCELIUM BOWL & FRUIT BODY
SCENT: WOOD , LEATHER & AMBRE



MYCELIUM & DRY FLOWERS BLOCK
SCENT : OUD , FIGUE , WOOD



MAT LEATHERS :
COCONUT
BARKCLOTH
WOOD
FISH SKIN



BIO SEQUINS
ALGAE BIO PLASTIC



BIOMATERIALS

8-FOAM
MEDIUM HARD
NATURAL BEIGE
BEE SWAX & BIO-POLYMER
100% BIODEGRADABLE

NATURAL MATERIAL 101

8-FOAM
SOFT
NATURAL BEIGE
BEE SWAX & BIO-POLYMER
100% BIODEGRADABLE

NATURAL MATERIAL 102

CHARCOAL FOAM COMPOSITE
BLACK
CHARCOAL & BIO-POLYMER
100% BIODEGRADABLE

NATURAL MATERIAL 201

PINEL
BLACK
LEFTOVER PINE NEEDLES &
BIO-POLYMER
100% BIODEGRADABLE

NATURAL MATERIAL 202

PINEL
LIGHT BROWN
LEFTOVER PINE NEEDLES +
BRANCHES & BIO-POLYMER
100% BIODEGRADABLE

301

PINEL
DARK GREEN
LEFTOVER PINE NEEDLES
& BIO-POLYMER
100% BIODEGRADABLE

302

NATURAL MATERIAL

THANKS!

More Works @
www.alineochoa.com
www.bio-designhub.org